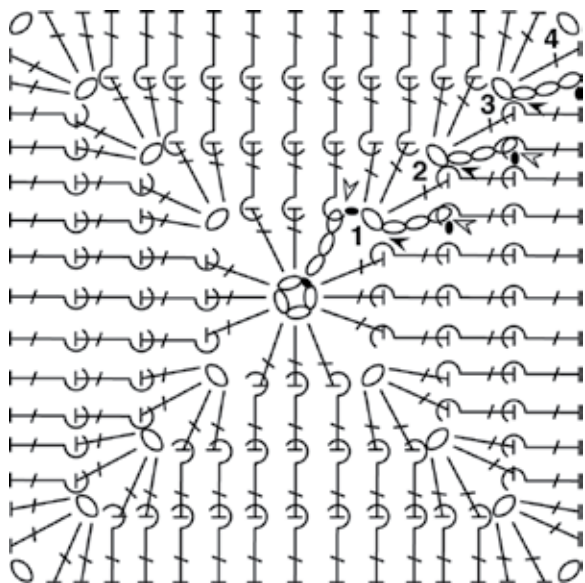


## 16: Raised Treble Square



### Raised Treble Square

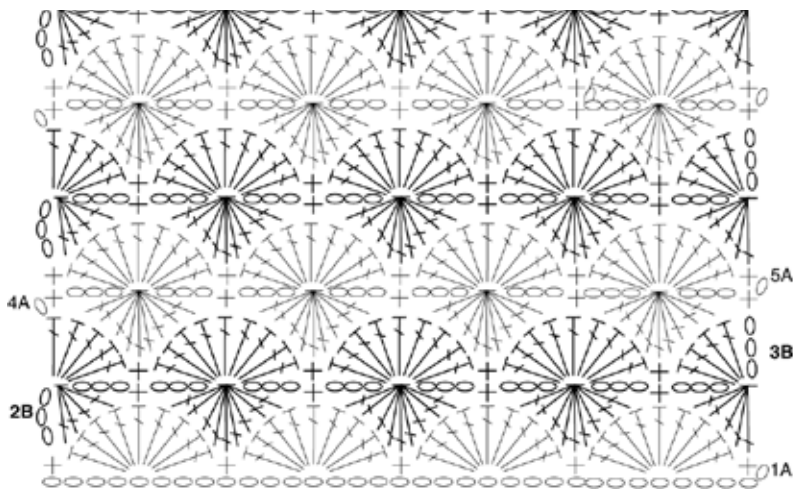
4 ch, join into ring with ss.

**Round 1:** 3ch, 2 tr into ring, (1 ch, 3 tr into ring) 3 times, ss into top of 3 ch to join. Fasten off - new colour.

**Round 2:** 3 ch (1 tr, 1 ch, 2 tr) all into corner sp, \*work 1 raised tr/back round each st to next corner 1 ch sp, \*\* (2 tr, 1 ch, 2 tr) into sp; rep from \* all round ending last rep at \*\*, ss into top of 3 ch to join. Fasten off - new colour.

Continue as Round 2 for another 1 or 2 rounds or until size required. Square can be varied by working raised tr/front on some rounds.

## Roundels



**Tips:** Different patterns will emerge depending on how many colours you use and when you change them. Roundels can also be added one at a time to the edge of fabric when you are 'scrambling'.

### Roundels

**Multiple of:** 8 sts + 1, add 1 for base ch, ie total here = 34 ch

**Row 1 (right side):** Miss 1 ch (does not count as st), always picking up 2 loops of each ch work 1 dc into next ch, \*miss 3 ch, 9 tr into next ch, miss 3 ch, 1 dc into next ch; rep from \* to end, turn. **Note:** It is very helpful to mark the chain for the next dc **before** you work the preceding 9 tr group

**Row 2:** 3 ch (count as first tr of next cl), tr4tog over next 4 tr, \* 3 ch, 1 dc into next tr, 3 ch, tr9tog over next 9 sts; rep from \* to last 6 sts, 3 ch, 1 dc into next tr, 3 ch, tr5tog over next 5 sts, turn.

**Row 3:** 3 ch (counts as 1 tr), 4 tr into st at base of 3 ch, \*miss 3 ch, 1 dc into next dc, miss 2 ch, 9 tr under top 2 lps of next ch; rep from \* to last 3 ch lp, miss 2 ch, 5 tr under top 2 lps of next ch, turn.

**Row 4:** 1 ch (does not count as st), 1 dc into st at base of 1 ch, \* 3 ch, tr9tog over next 9 sts, 3 ch, 1 dc into next st; rep from \* to end, turn.

**Row 5:** 1 ch (does not count as st), 1 dc into st at base of 1 ch, \* miss 2 ch, 9 tr under top 2 lps of next ch, miss [cl and 3 ch], 1 dc into next dc; rep from \* to end, turn.

Rep rows 2 - 5 for pattern and end after Row 10 or any Patt Row 2.

### Abbreviations:

Ch - chain; cl - cluster, ie any 2 or more stitches which are joined together; sp - space; ss - slip stitch; dc - double crochet; tr - treble; st - stitch; yoh - yarn over hook; rep - repeat; tch - turning chain; tr4(5/9)tog - treble 4(5/9)

together, worked thus: \*yoh, insert hook into centre of next st, yoh, pull loop through, [yoh, pull through 2 loops] twice, rep from \* 3(4/8) more times, yoh pull through all 5(6/10) loops on hook; tr/rb - treble raised at the back, thus:

work treble normally except insert hook around stem of stitch, going in and out of fabric at back and from right to left (Lefthanders: from left to right).